



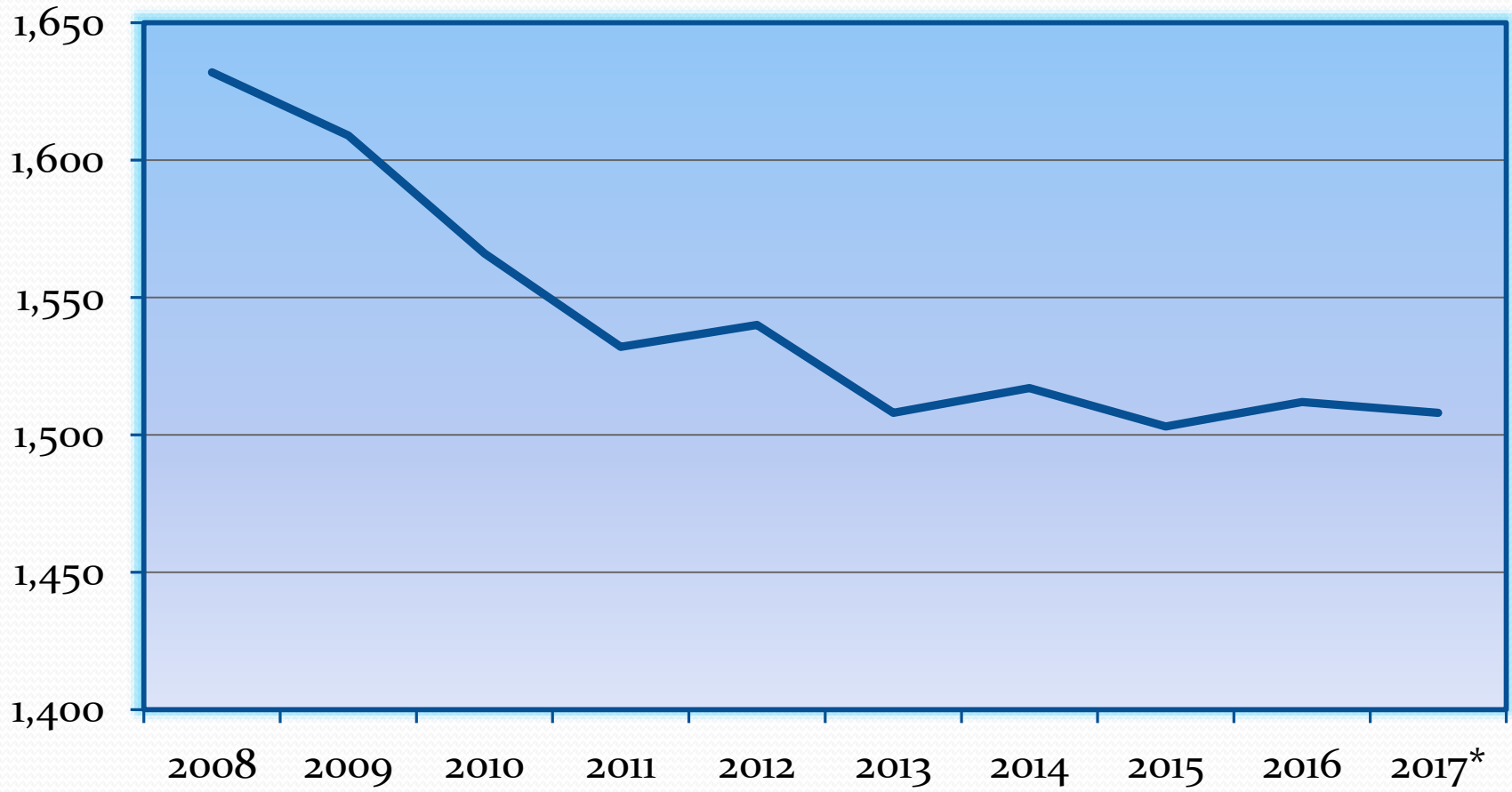
WINNISQUAM REGIONAL SCHOOL DISTRICT

Knowledge ★ Inspiration ★ Success

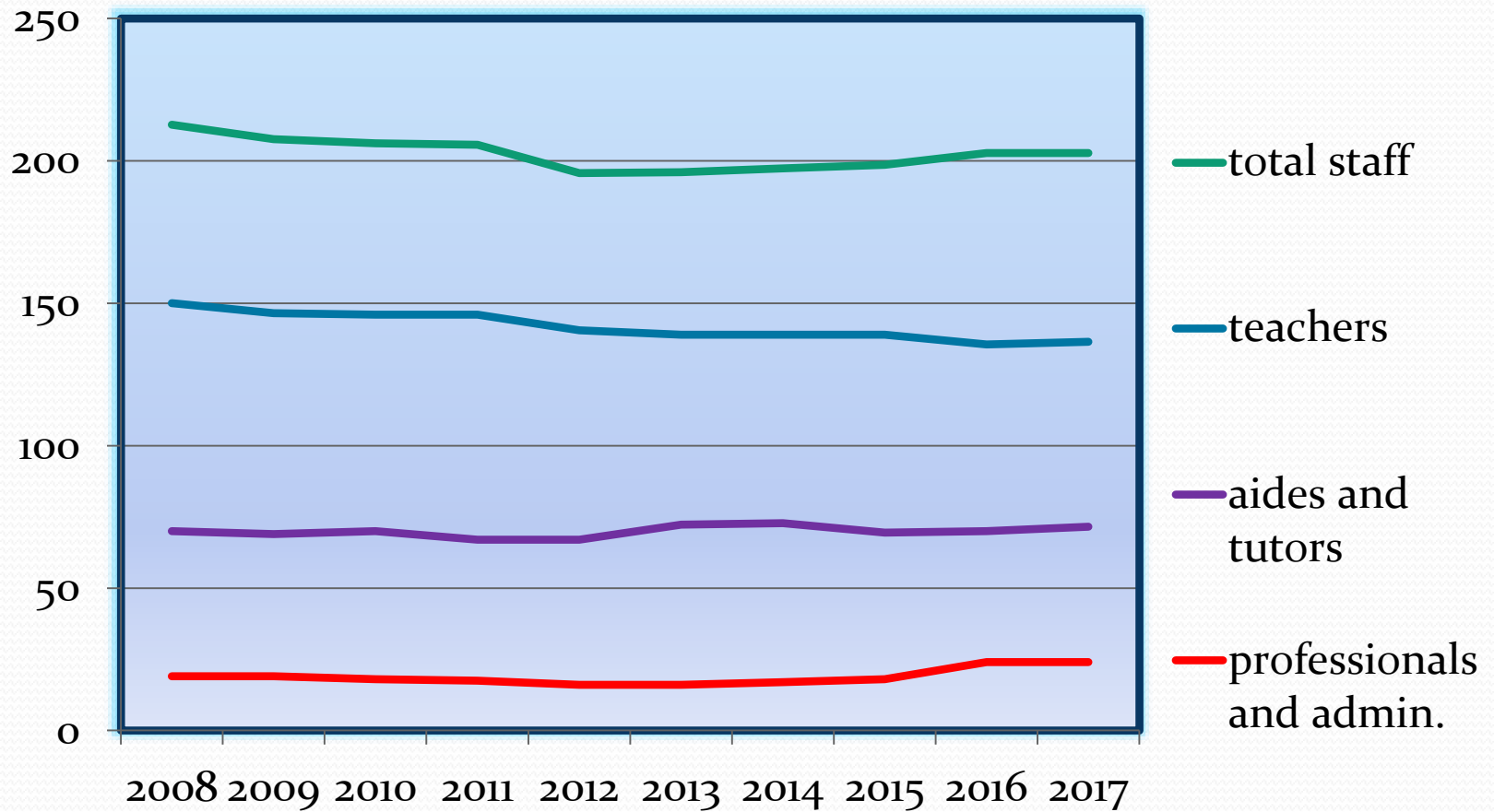
Shaping our Future Together

Northfield ★ Sanbornton ★ Tilton

Student Enrollment



Staffing





$$\begin{aligned} 2m + 4 &= 14 \\ 2m &= 14 - 4 \\ 2m &= 10 \\ m &= 5 \end{aligned}$$
$$\begin{aligned} -(2-m) &= (3)-1 \\ \leftarrow +m &= 3 \\ m &= -1 \end{aligned}$$
$$\begin{aligned} 4 - 3 &= 7 \\ 4 - 3 &= 7 \\ -3 &= 3 \\ -1 \cdot 3 &= 3 \cdot -1 \\ \frac{1}{3} \cdot 3 &= -3 \cdot \frac{1}{3} \\ &\leftarrow -1 \end{aligned}$$
$$\begin{aligned} 2 - m &= 3 \\ 2 - m &= 3 \\ -1m &= 1 \\ -1 \cdot -1m &= 1 \cdot -1 \\ m &= -1 \end{aligned}$$

Today

Small group learning

- student to student
- student to teacher
- student to technology (teacher monitoring)

Differentiated instruction

- small groups
- same lesson - different books

Special education, accelerated learning

- different lessons
- Student assigned Paraprofessionals
- Individualized services such as occupational therapy, speech, physical therapy, autism specialist

Technology





Special Education

	2005	2010	2015
“504” plans	154	115	72
Individual Education Plans	281	216	259
Total	435	331	331
As a percent of total enrollment	25.3%	21.6%	21.9%

Differentiated/Accelerated Learning

	2000	2005	2015 (HS)	2015 (MS)
HUOT	29	47	51	
Advanced Placement (AP)	2	11	83	
Ag. Center	93	66	64	
Running Start		60	104	
STEM			123	
State Scholars			41	85
Online courses			108	
Honor Society (invitees)			34	150
Other (extended learning opportunities, school across the street, etc.)			64	
Total	124	184	672	235

New Expectations

Graduation Credits

- 2002 – 21 credits required
- 2015 – 24 credits required

Instruction

- More math
- More science

Technology

- 2005 - keyboarding, reports and slide presentations
- 2015 grades 3 – 12 ePortfolios (websites, videos, digital newspapers)
- High School (engineering/STEM) 3D design, robotics, rockets, application coding

Results

Test Scores

Smarter Balanced test results (% of proficiency)		
	English/ Language Arts	Math
WRSD	61	47
State	58	46
Lakes Region	57	43

Graduation (as a percent of the senior class)

- 2010 – 73 %
- 2015 – 76 %

Drop outs (as a percent of the senior class)

- 2010 – 9.5%
- 2015 – 7.7%

Results (con't.)

Post graduation

	2012	2015
4 year school	31	35
1 and 2 year programs	31	28
Job or military	36	15