

DP Developing Practices: 6 Critical Actions

The six Critical Actions highlighted below, and on the following page, represent the *Developing Practices* in the Winnisquam Regional School District. *Developing Practices* include those Critical Actions where evidence suggested that the district’s practices were under development. Additional time is needed for the practices to be institutionalized and properly categorized as strengths or leverage points. As a result, reviewers have provided less detailed information relative to these practices.

Theme 2

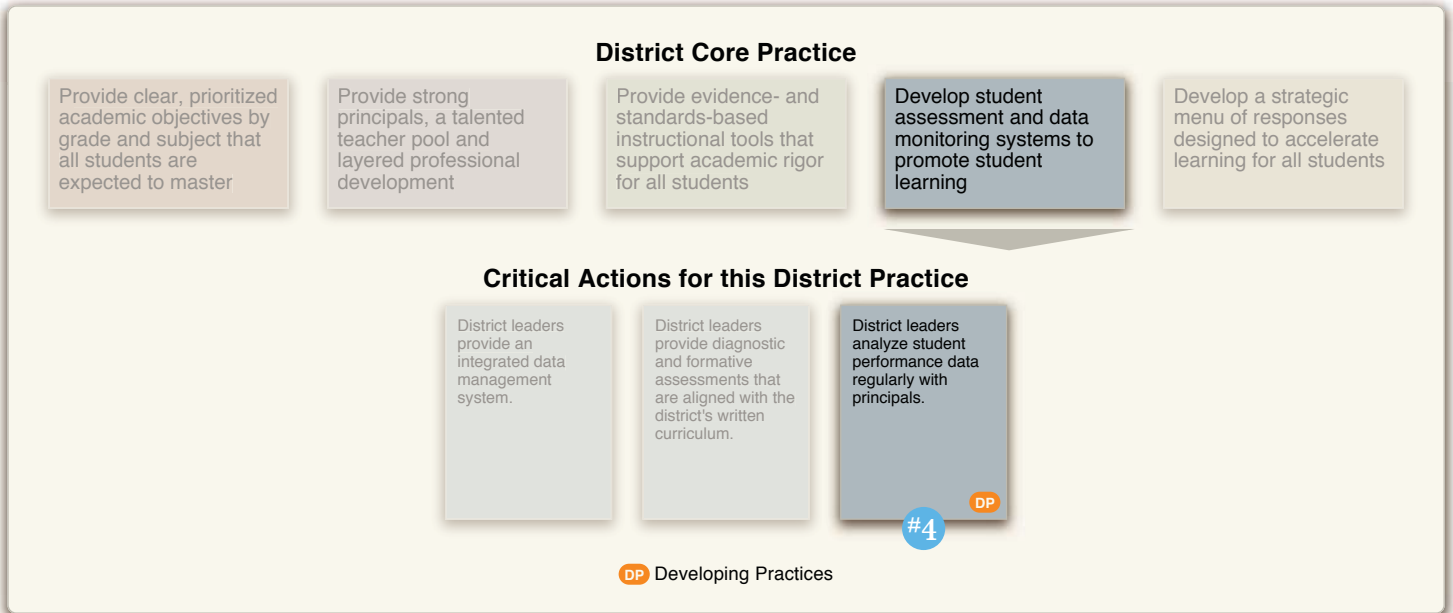
Staff Selection, Leadership, & Capacity Building



(continued on next page)

Theme 4

Monitoring: Compilation, Analysis, & Use of Data



Theme 5

Recognition, Intervention, & Adjustment

